

\$275,490*

JUST ADD LAND



**Lewis
Homes**
Steel Frame Home Builders

LODDON 220 PACKAGE

Shepparton (03) 5823 2179

Joe - 0447 288 368

www.lewishomes.com.au

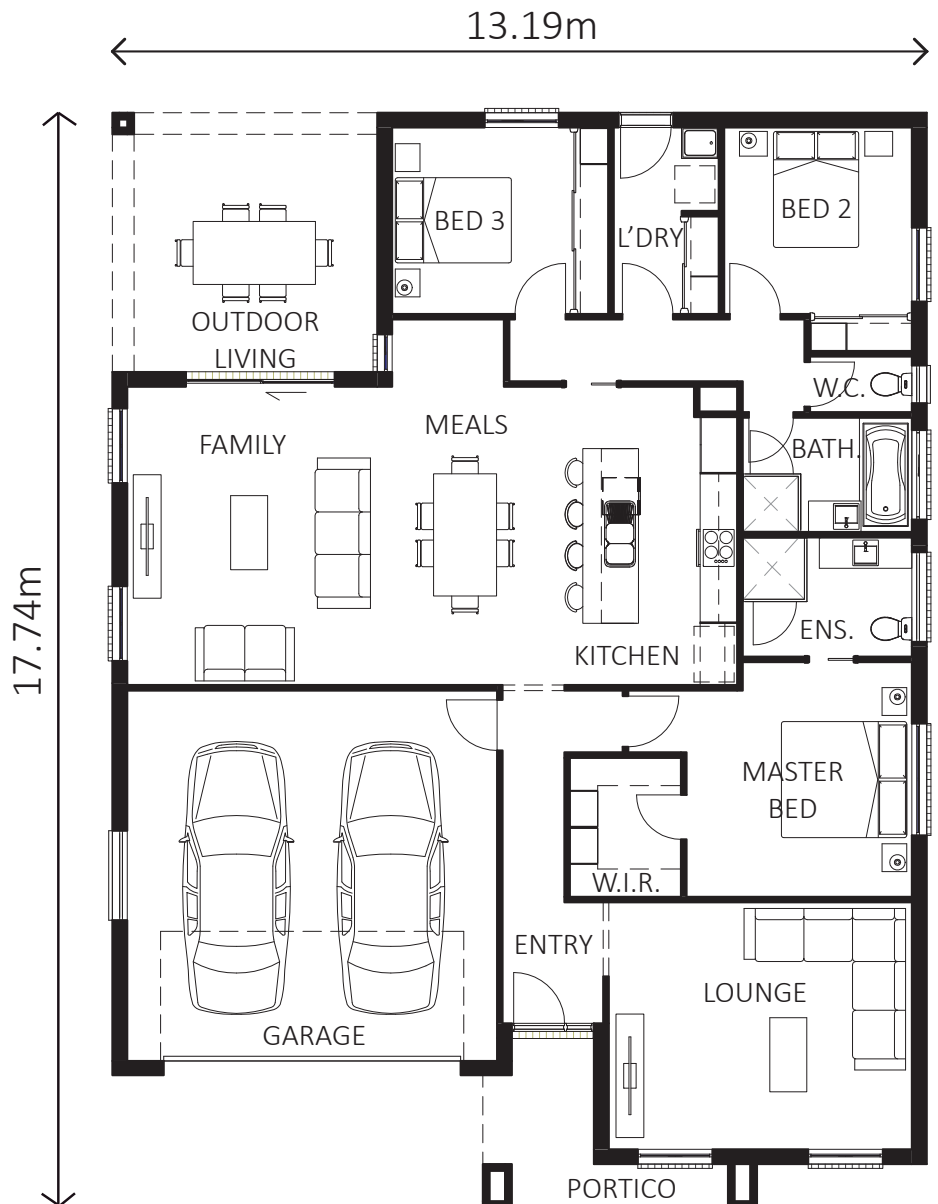
Ceiling Height 2550mm

Residence	155.53m ²	16.74sq
Garage	38.97m ²	4.19sq
Outdoor	18.02m ²	1.94sq
Portico	6.62m ²	0.71sq
Total	219.14m ²	23.59sq

Master Bed	3650x3800
Bed 2	3040x3020
Bed 3	2900x3020
Family/Meals	7380x4830
Lounge	4910x4000
Outdoor	4290x4200
Garage	5990x6000

Some of our great package inclusions are..

- Steel Framing
- 2550mm Ceiling Height
- Colorbond Roof
- Bal 12.5
- 6 Star Energy Rating VIC or BASIX NSW
- Site Works, Foundations & Connections
- Plain External Concrete (Design Specific)
- Panel Lift Door with Remote
- Floor Coverings Throughout
- Evaporative Cooling & Ducted Gas Heating
- Custom Cabinetry with Soft Close
- Westinghouse Appliances Inc. Dishwasher
- Tiled Shower Bases
- LED Downlights
- Shelving to all Bedroom Robes
- Window Locks & Flyscreens
- Screen Doors to External Sliding Doors
- Solar Hot Water with 30 Evacuated Tubes
- Letterbox
- TV Aerial & Splitter Box to 2 Points
- Wall Fitted Clothes Line
- Plus Many More Inclusions!



*Pricing based on the Shepparton area.
Package standard inclusions subject to change.