

# \$284,930\*

## JUST ADD LAND



Some of our great package inclusions are..

- Steel Framing
- 2550mm Ceiling Height
- Colorbond Roof
- Bal 12.5
- 6 Star Energy Rating VIC or BASIX NSW
- Site Works, Foundations & Connections
- Plain External Concrete (Design Specific)
- Panel Lift Door with Remote
- Floor Coverings Throughout
- Evaporative Cooling & Ducted Gas Heating
- Custom Cabinetry with Soft Close
- Westinghouse Appliances Inc. Dishwasher
- Tiled Shower Bases
- LED Downlights
- Shelving to all Bedroom Robes
- Window Locks & Flyscreens
- Screen Doors to External Sliding Doors
- Solar Hot Water with 30 Evacuated Tubes
- Letterbox
- TV Aerial & Splitter Box to 2 Points
- Wall Fitted Clothes Line
- Plus Many More Inclusions!

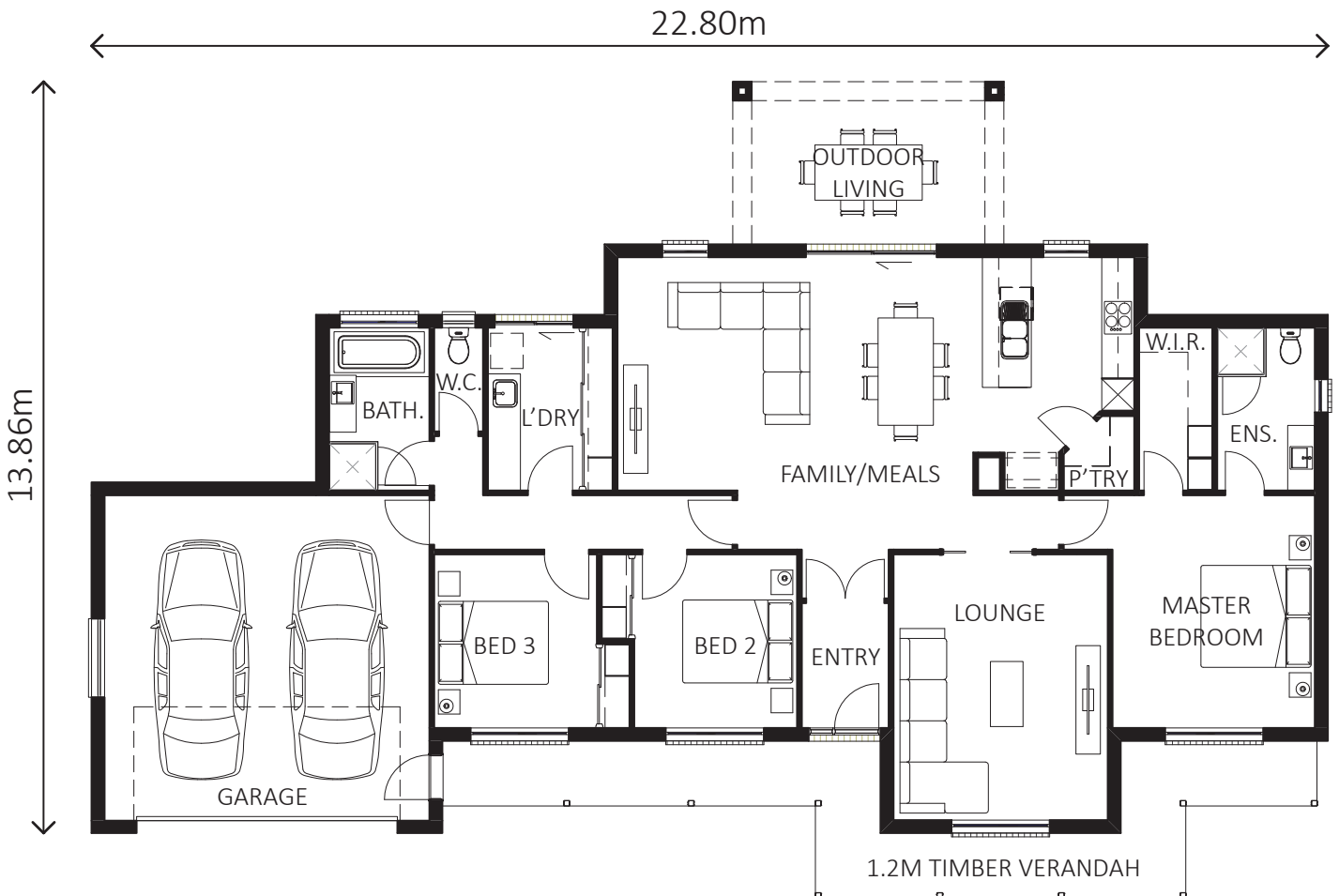
\*Pricing based on the Shepparton area.  
Package standard inclusions subject to change.



# PIONEER 237 PACKAGE

Ceiling Height	2550mm		
Residence	157.74m <sup>2</sup>	16.98sq	
Garage	40.21m <sup>2</sup>	4.33sq	
Outdoor	15.00m <sup>2</sup>	1.61sq	
Verandah	23.44m <sup>2</sup>	2.52sq	
Total	236.39m <sup>2</sup>	25.45sq	

Master Bed	3730x4290
Bed 2	3000x3200
Bed 3	3000x3200
Family/Meals	6730x5390
Lounge	3950x4900
Outdoor	5000x3000
Garage	5990x6000



Shepparton (03) 5823 2179

Joe Bovalino - 0447 288 368

[www.lewishomes.com.au](http://www.lewishomes.com.au)

VIC Licence CDB – U66238 NSW Licence 80648C