

\$299,520*

JUST ADD LAND



Some of our great package inclusions are..

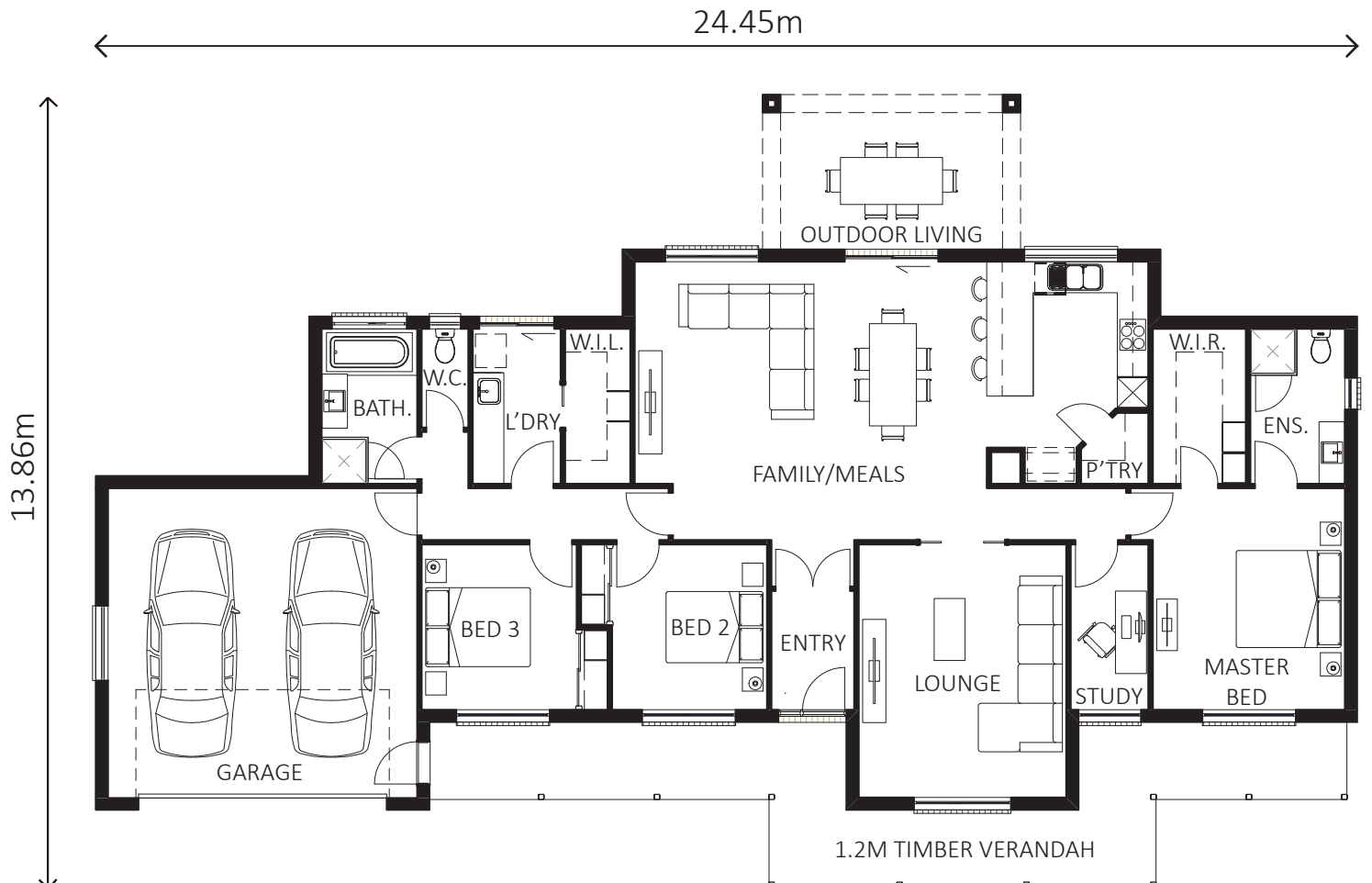
- Steel Framing
- 2550mm Ceiling Height
- Colorbond Roof
- Bal 12.5
- 6 Star Energy Rating VIC or BASIX NSW
- Site Works, Foundations & Connections
- Plain External Concrete (Design Specific)
- Panel Lift Door with Remote
- Floor Coverings Throughout
- Evaporative Cooling & Ducted Gas Heating
- Custom Cabinetry with Soft Close
- Westinghouse Appliances Inc. Dishwasher
- Tiled Shower Bases
- LED Downlights
- Shelving to all Bedroom Robes
- Window Locks & Flyscreens
- Screen Doors to External Sliding Doors
- Solar Hot Water with 30 Evacuated Tubes
- Letterbox
- TV Aerial & Splitter Box to 2 Points
- Wall Fitted Clothes Line
- Plus Many More Inclusions!

*Pricing based on the Shepparton area.
Package standard inclusions subject to change.



PIONEER 259 PACKAGE

Ceiling Height	2550mm				
Residence	171.38m ²	18.45sq	Master Bed	3730x4290	
Garage	40.21m ²	4.33sq	Bed 2	3000x3200	
Outdoor	15.00m ²	1.61sq	Bed 3	3000x3200	
Verandah	31.77m ²	3.42sq	Family/Meals	6730x5390	
Total	258.36m ²	27.81sq	Lounge	3950x4900	
			Outdoor	5000x3000	
			Garage	5990x6000	



Shepparton (03) 5823 2179

Joe Bovalino - 0447 288 368

www.lewishomes.com.au

VIC Licence CDB - U66238 NSW Licence 80648C